

Fall Alumni Newsletter 2015

[Campaign Preview](#)[HTML Source](#)[Plain-Text Email](#)[Details](#)

ABE Alumni E-News - Fall Edition - October 30, 2015

ABE ranks 2nd nationally

U.S. News & World Report released the [2016 "America's Best Colleges"](#) rankings, and in biological/agricultural engineering, Iowa State is the No. 2 ranked program among all national universities, and 2nd among public universities. The program is in three-way tie with Texas A&M University – College Station and the University of Illinois – Urbana-Champaign.

For the original story, [click here](#).

AST Club: snowblower service days



Video by Jared Calvert

Fall College of Engineering Career Fair featuring ABE alums



Video by Jared Calvert

Be sure to look for the next issue of ABE alumni e-news featuring the Agriculture and Life Sciences career fair.

Hobart Beresford video archive

Hobart Beresford was born December 6, 1896 in Vinton, Iowa. He received a B.S. (1924) in agricultural engineering from Iowa State College (University) and a professional degree (1941) in the same field from Iowa State. He taught at the University of Idaho (1924-1927; 1929-1946). He also worked as an agricultural engineer (1927-1928) with the Idaho Power Company. In 1936, he worked with the U.S. Government on rural housing projects. Beresford returned to Iowa State in 1946 to become the Head (1946-1962) of the Agricultural Engineering Department. Beresford's main areas of research include rural electrification and the handling and storage of agricultural products.





For the full [Hobart Beresford Agricultural Machinery Films playlist](#), check out the ISU Special Collections YouTube channel.

Making an impact - ABE research and extension highlights

PI: **Steve Hoff**

COI: **Steve Mickelson**

Award Amount: \$231,339

Title: Identifying the cause and subsequent remediation of foaming in swine manure management systems

COI: **Raj Raman**

Award: \$1,374,135

Title: NSF engineering research center for biorenewable chemicals (CBIRC)

PI: **Stuart Birrell**

COI: **Mark Hanna**

COI: **Brian Steward**

Award Amount: \$36,078

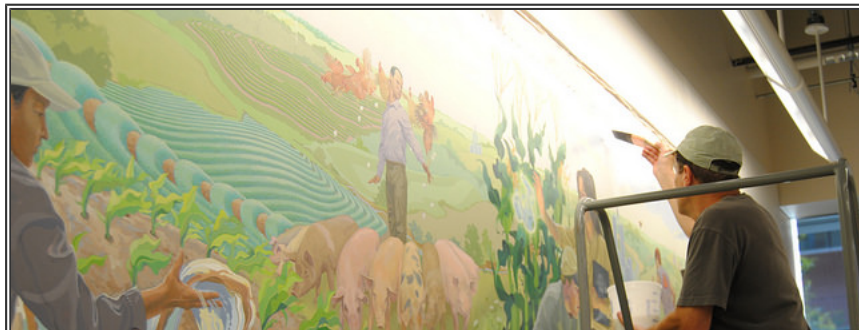
Title: Planter depth control evaluation and testing

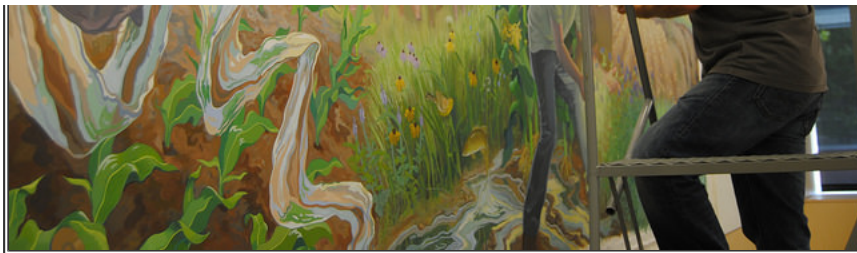
ABE Alumni in the news

- [Ag engineering alum named 2015 ASABE Fellow](#)
- [ABE alums featured in Resource Magazine careers issue](#)
- [New staff join Iowa State University Northern Research Farm](#)
- [Alum, farmer in Deerfield brings new idea from college](#)
- [ITec alum named President, COO of Toro Company \(TTC\)](#)

More ABE news

- New mural in Davidson Conference room: [Artists' Statement: Davidson's Dream](#)





- For more ABE news, check out our homepage [news feed](#).

E-News schedule

ABE Alumni E-News is published on a quarterly basis. The next issue will be published January 31, 2016. If you have news items or event dates to include, please send them to Dana Woolley by January 17th.

Connect with us

For more alumni advice videos, check out our YouTube channel!



ABE @ ISU is distributed by the Department of Agricultural and Biosystems Engineering.

If you have questions or news items to suggest, please contact Dana Woolley at dwoolley@iastate.edu.
1340 Elings Hall, Ames, IA 50011, 515 294-1434, abe@iastate.edu.

Copyright © 2015, Iowa State University of Science and Technology. All rights reserved.

You are receiving this email as an alumni of the Department of Agricultural and Biosystems Engineering at Iowa State University.

[Unsubscribe](#)